



Big Dreamers Festival Visual Guide for The Hive

This is a visual resource to assist your visit to the theatre. This resource is intended to help prepare any visitors for a new experience and to help them to become familiar with the surroundings and situation.



Supported using public funding by
**ARTS COUNCIL
ENGLAND**



Welcome to The Hive. The Hive is the city centre's library and hosts lots of events.



This is the entrance. You will walk through here and into the foyer.



The foyer is where the audience can wait before the show begins. There will be people in black t-shirts who work for The Hive, you can ask them for help if you are unsure.



If you turn right, there is a cafe where you can buy food and drink,
and find accessible toilets.



The show you are going to see is in The Studio.



The studio is on the left hand side of the foyer, after you walk past the staff station.

There are two doors to The Studio. One will have a “NO ENTRY” sign. You cannot go through this door.



A table will be located outside the other door. An usher (helper) in a red t-shirt will be there to help you.
The Usher will also tell you when it is time to go inside the theatre.
They will ask your name and cross it off their list.



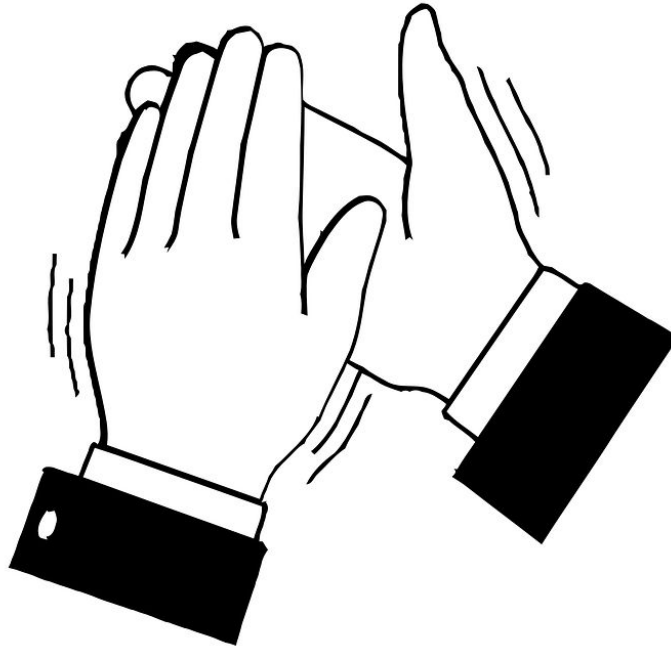
You can sit anywhere you like in The Studio. Before the show, The Studio will be busy, and probably quite noisy, as people are finding where to sit and getting ready for the show to start. Don't worry, everyone will soon sit down and be quiet.



When the show is about to start, the lights in the studio will be turned off and it will become dark. Everyone will be quiet. You should also try to be as quiet as you can, so that you don't miss any of the show.



When the show finishes the people on stage will bow. Everyone will clap or wave to show that they enjoyed the show. You can clap or wave too if you want to.



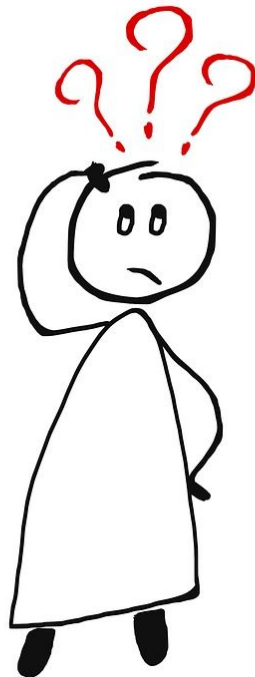
During the show, there might be something which you find funny. You can laugh if you like.



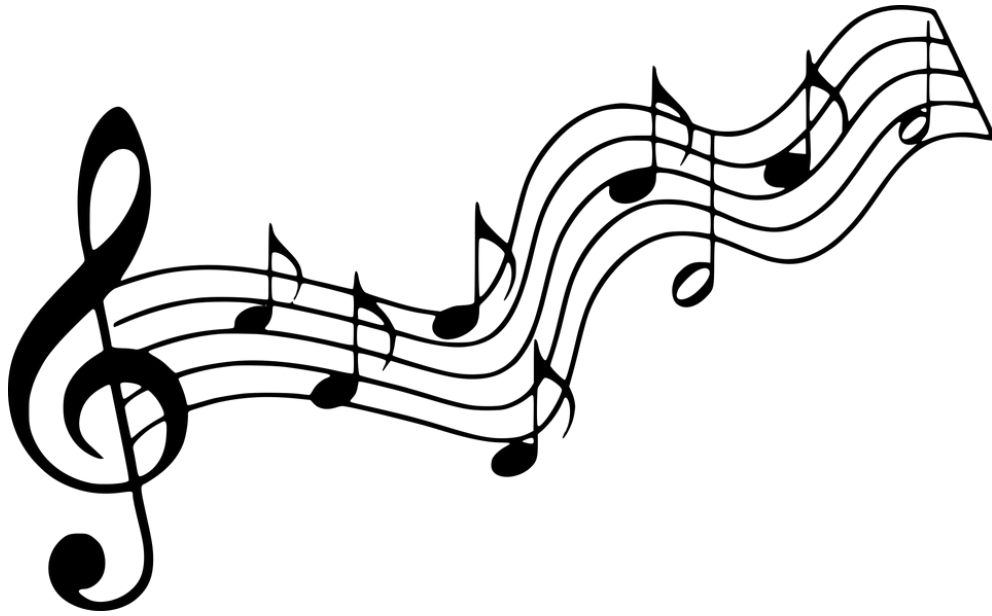
During the show, you might see something that makes you feel sad. You can feel sad if you like, that's okay.



During the show, one of the people on stage may ask the audience a question, and the audience will shout out the answer. You can shout out the answer too, if you want to.



During the show, one of the people on stage may ask the audience to join in with a song. You can join in if you want to.



After the show finishes, the lights in the studio will come back on and everyone will leave. It will be busy, but you can always wait in your seat until everyone else has gone. If you need help just ask one of the ushers.

